




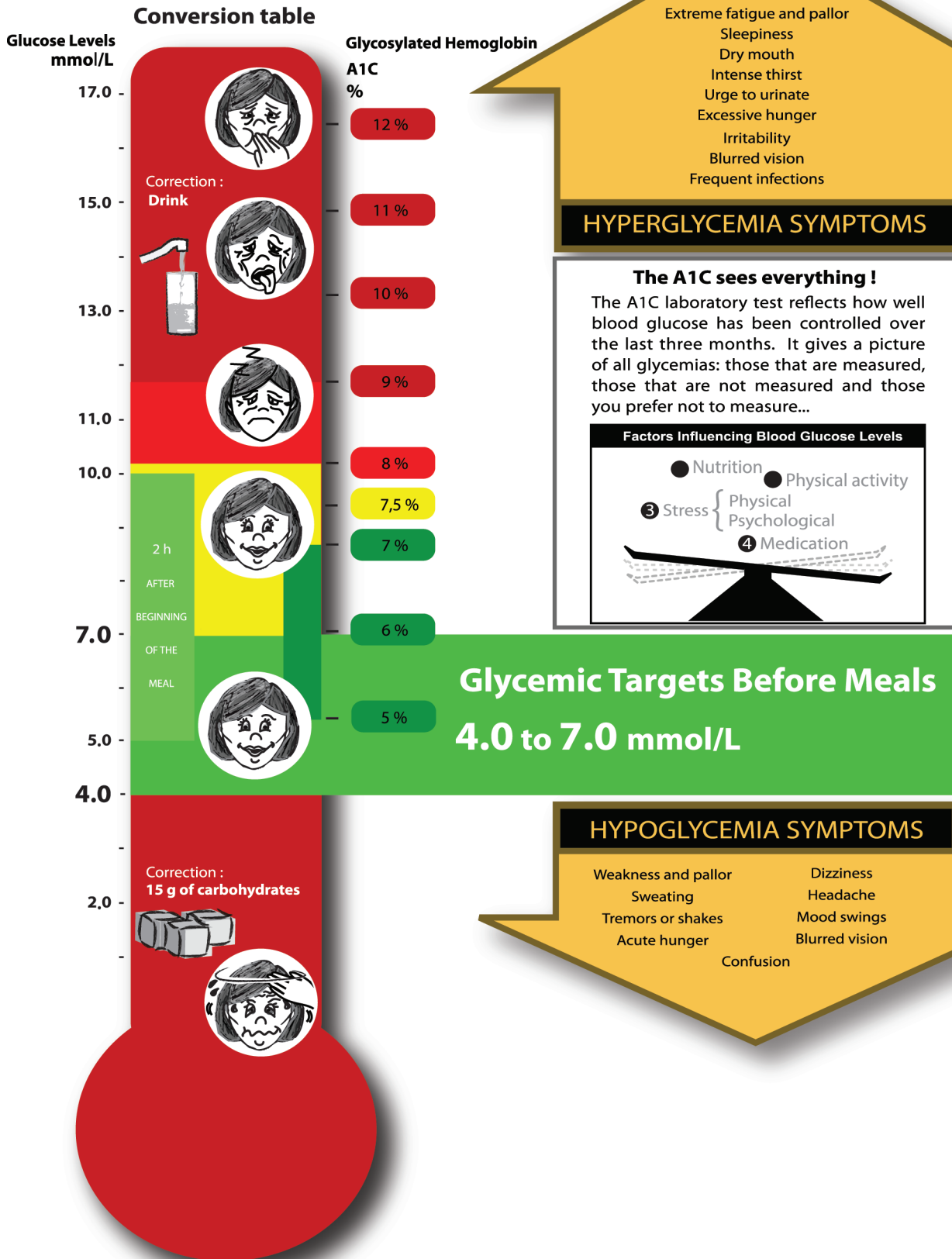


	Pen injectors	Insulins
Lilly	<input type="radio"/> HumaPen Luxura HD 	<input type="radio"/> Humalog (lispro) 
	<input type="radio"/> HumaPen Savvio 	<input type="radio"/> Humulin R 
	<input type="radio"/> Humulin N KwikPen (prefill) 	<input type="radio"/> Humulin N 
	<input type="radio"/> Humalog KwikPen (prefill) 	<input type="radio"/> Humulin 30/70 
	<input type="radio"/> Humalog 200 unités/mL KwikPen (prefill) 	<input type="radio"/> Humalog Mix25 
	<input type="radio"/> Humalog Mix25 KwikPen (prefill) 	<input type="radio"/> Humalog Mix50 
	<input type="radio"/> Humalog Mix50 KwikPen (prefill) 	
Novo Nordisk Canada Inc.	<input type="radio"/> NovoPen 4 	<input type="radio"/> NovoRapid (aspart) 
	<input type="radio"/> NovoPen Echo 	<input type="radio"/> Novolin ge Toronto 
	<input type="radio"/> NovoRapid FlexTouch (prefill) 	<input type="radio"/> Novolin ge NPH 
	<input type="radio"/> Levemir FlexTouch (prefill) 	<input type="radio"/> Novolin ge 30/70 
		<input type="radio"/> Novolin ge 40/60 
		<input type="radio"/> Novolin ge 50/50 
		<input type="radio"/> NovoMix 30 
	<input type="radio"/> Levemir (detemir) 	
NovoTwist needles are only designed for Novo Nordisk pen devices.		
sanofi-aventis Canada	<input type="radio"/> JuniorSTAR 	<input type="radio"/> Apidra (glulisine) 
	<input type="radio"/> CliKSTAR 	<input type="radio"/> Lantus (glargine) 
	<input type="radio"/> Apidra SoloSTAR (prefill) 	
	<input type="radio"/> Lantus SoloSTAR (prefill) 	
	<input type="radio"/> Toujeo 300 units/mL SoloSTAR (prefill) 	
<input type="radio"/> Others:		
<p>Note: Check the product monograph for the type of needle that can be used with the pen injector selected.</p>		
<ul style="list-style-type: none"> • Use shorter needles of 4 mm, 5 mm or 6mm. They are suitable for all people with diabetes, regardless of body mass index (BMI). • The use of 4 mm pen needles avoids the risk of intramuscular injection. • Structured rotation of anatomical area and injection site avoids lipohypertrophy. 		

Suggested document: FIT Canada-Forum for Injection Technique Canada - Recommendation for best practice in injection techniques - 2nd edition 2015 - www.fit4diabetes.com

Glycosylated hemoglobin (A1C) Shows the control of diabetes in the last two to three months



References: Nathan DM. and al. Diabetes Care 2008;31:1473-1478

Realisation: Médecine de jour métabolique de l'Hôtel-Dieu du CHUM - Françoise Desrochers, nurse clinician, diabetes educator, CHUM
1st édition 2008: Pamela C. Gariépy, cartoonist; and Jean-Charles Marier, graphist - 2nd édition 2014: Isabelle Schmidt, graphist